

Ralph Stiebel

604 787 2500  
rstiebel@sutton.com  
www.homesofvancouver.com

**Sutton**  
Sutton WestCoast Realty  
100 - 889 Harbourside Drive,  
North Vancouver, BC V7P 3S1

*Real Estate made Simple.*

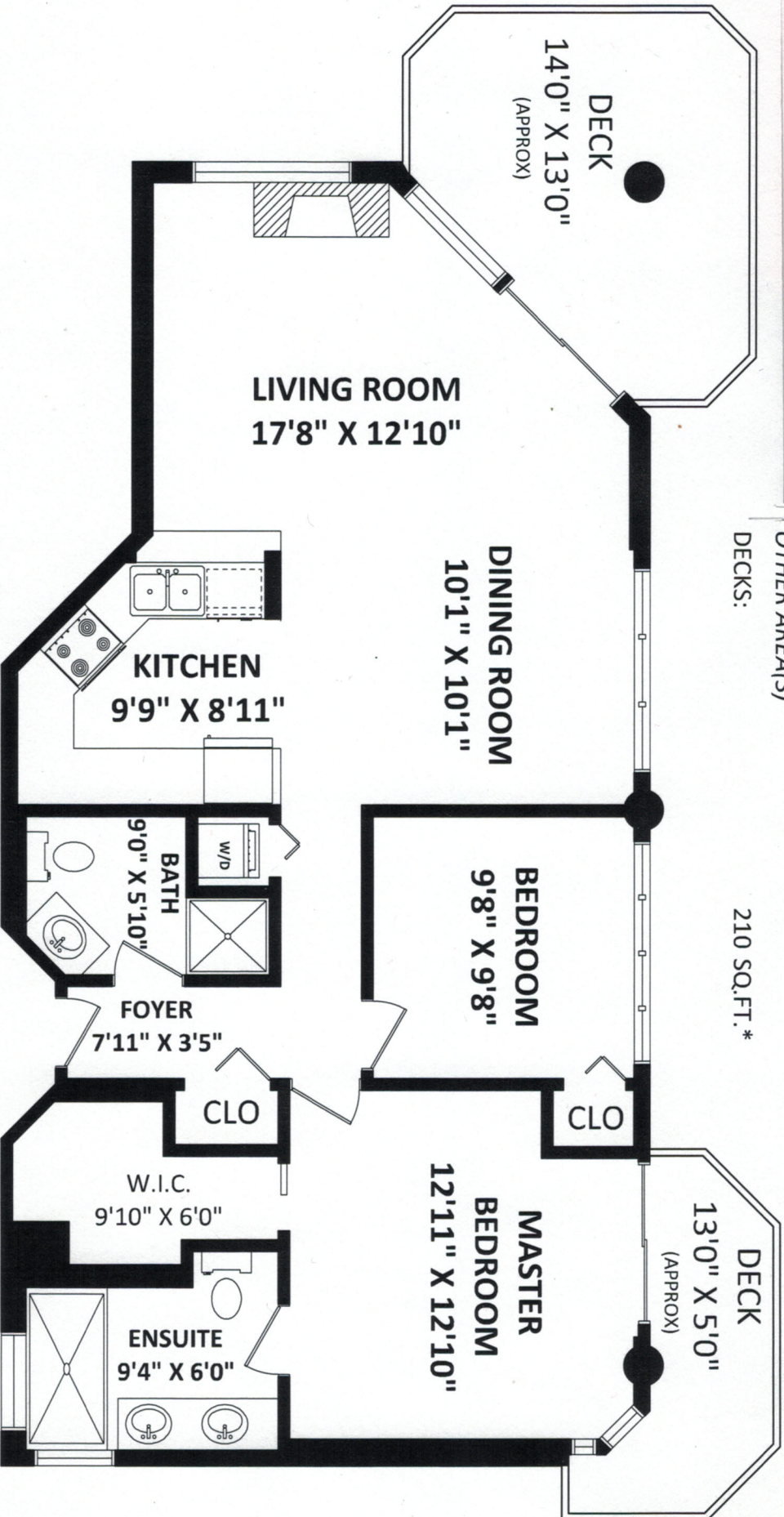


**TOTAL FINISHED AREA: 989 SQ.FT.**

OTHER AREA(S)

DECKS:

210 SQ.FT.\*



FLOOR PLAN BY:



[NOVEMBER 8, 2017]

TEL: 604-575-1244

www.seevirtual360.com

**DISCLAIMER:**

1. MEASUREMENTS ARE FOR PROMOTIONAL USE ONLY & ARE NOT INTENDED FOR CONSTRUCTION USE. ROOM DIMENSIONS ARE APPROXIMATE. MEASUREMENTS & CALCULATIONS FOR FINISHED AREAS ARE E&O INSURED.
  2. FINISHED AREAS ARE ENCLOSED AREAS IN A HOUSE THAT ARE SUITABLE FOR YEAR-ROUND USE. EMBODYING WALLS, FLOORS, AND CEILINGS THAT ARE SIMILAR TO THE REST OF THE HOUSE. (ANSI Z765-2003)
  3. THIS FLOOR PLAN MAY ONLY BE REPRODUCED WITH PERMISSION OF THE REALTOR(S) ON THIS FLOOR PLAN.
- \* ANY MEASUREMENT WITH AN ASTERISK (\*) OR (APPROX) ARE APPROXIMATE AND FOR ILLUSTRATION PURPOSES ONLY AND ARE NOT E&O INSURED.

SCALE:

